



# FOREST FIRE UPDATE

## COMMUNITY NEWSLETTER FOR **JUNE 5, 2025** **KENORA 020/KENORA 014**



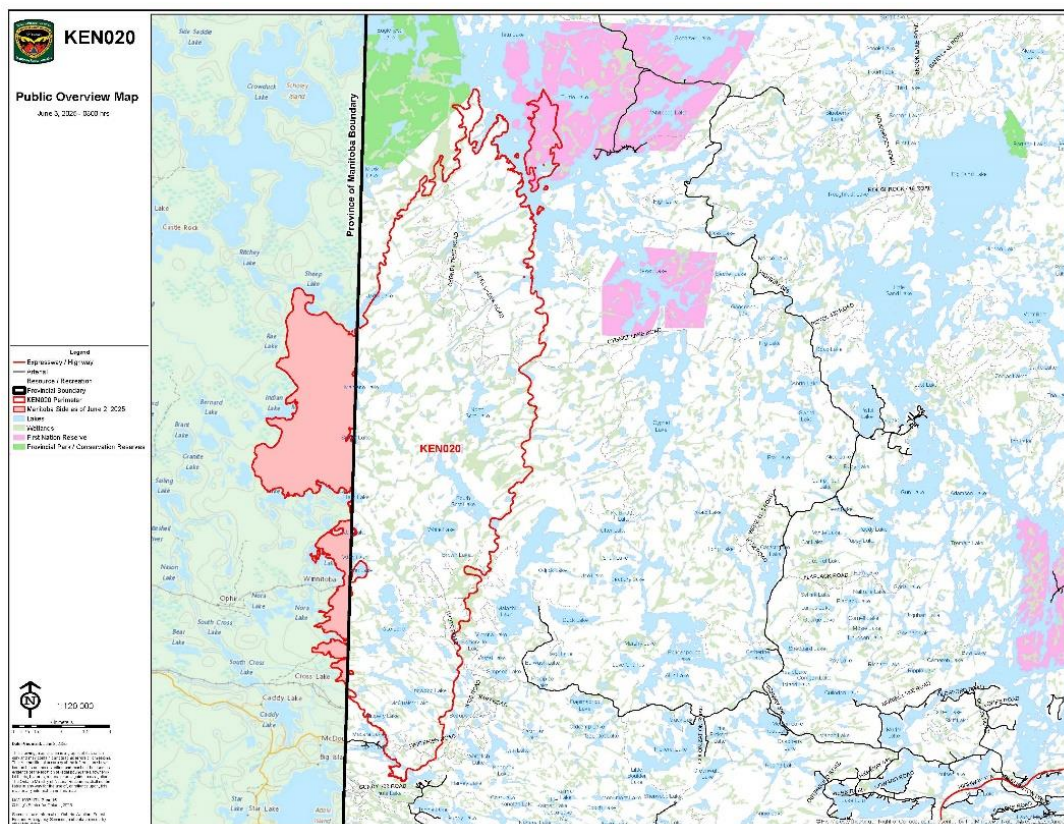
*Kenora 14, now under control, showing signs of green up. June 3, 2025.*

### **Current Fire Situation**

- A total of 9 helicopters and 183 personnel are assigned to Kenora 20 and Kenora 14, comprising Type 1 and Type 2 firefighters, overhead staff, flight crews and medics.
- Smoke from active fires to the west and northwest continues to be a concern in the area.

## Kenora 20

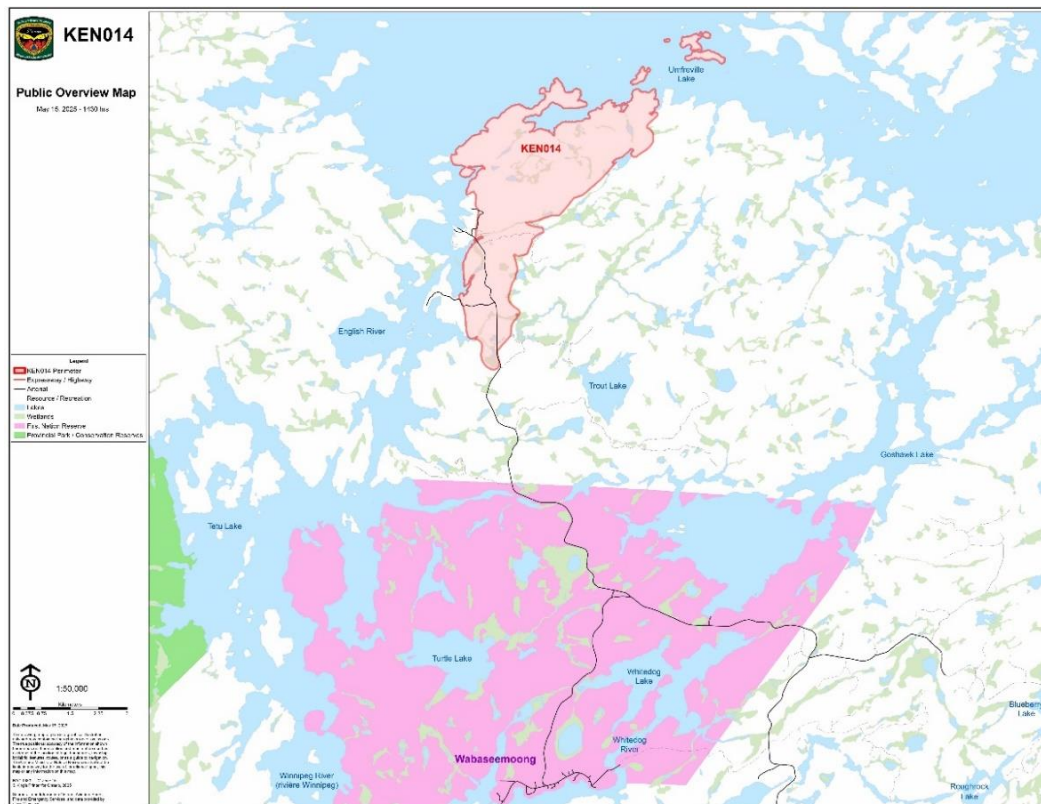
- Kenora 20 remains at 36,039.2 hectares in size. The fire size includes the entire fire area spanning Ontario and Manitoba (fire EA063). All recent growth on the fire has been recorded on the western flank of the fire, with the eastern perimeter remaining intact.
- Ontario crews positioned to the northwest flank of the fire in Manitoba made excellent progress tying in the fire to natural boundaries to prevent further spread to the northeast toward Jadel Lake.
- Fire crews are making steady progress inward from the fire's perimeter targeting and extinguishing hotspots on the Ontario side of the fire. The highest concentration heat on the eastern flank is being observed in the area west of Malachi Lake.
- Conditions in the area - and across the Northwest Region - remain extremely dry despite light precipitation over the fire area on Monday.
- Despite strong, sustained winds throughout the day, fire behaviour remained low yesterday with the most active burning observed in the interior.





## Kenora 14

- Kenora 14 is now under control at 1,607 hectares in size.
- This fire has now received sufficient suppression to prevent any further spread.
- Crews continue to make excellent progress in addressing all remaining hot spots.



*Date on map represents most up-to-date perimeter.*

## Information Contacts

AFFES Brown IMT – Information Officer (fire updates, media inquiries)

Alison Bezubiak – [affes.inc1-info@ontario.ca](mailto:affes.inc1-info@ontario.ca) / 807-323-3743

AFFES Community Liaison Officer (Wabaseemoong, area Indigenous communities)

Krista Prosser – [Krista.Prosser@ontario.ca](mailto:Krista.Prosser@ontario.ca) / 807-407-9675

Kenora District IMT – Information Officer (road closures, travel restrictions)

Conor Lee Kam – [conor.leekam2@ontario.ca](mailto:conor.leekam2@ontario.ca) / (807) 620-7883

# Travel restrictions in fire area

## KENORA 20

New Implementation orders are now in effect around wildland fires in the Kenora Sector to protect public safety and facilitate effective fire suppression.

Effective June 5, 2025 @ 8:00am CST, the new implementation orders will allow residents and cottage owners in the Ingolf area, including Broderick and Gundy townships to return to the area.

Multiple restrictions and road closures are still in effect in the Kenora area, including directly north of Broderick and Gundy township.

All travel and use of roads including Werner Lake Road; the area 500m west of Cygnet River on the Cygnet Lake Road, Malachi Lake Road and White Road network remains prohibited unless authorized by a travel permit.

All use of lakes and waterways within the area including the Winnipeg River and Cygnet River north of Swan Lake, including Eaglenest Lake, Tetu Lake, Musk Lake, Jadel Lake, White Lake, Rice Lake, North Scot Lake, South Scot Lake, Malachi Lake, Otter Lake and Duck Lake, is prohibited.

All use of lakes and waterways within the area East of the Manitoba border, North of the Winnipeg River and west of the English River and Umfreville Lake, including Shinewater Lake, Huston Lake, Calvary Lake, Davidson Lake, Reynar Lake, Bain Lake, Burton Lake and Wilson Lake is prohibited.

All use and occupation of Crown Land, identified on the map available at [Ontario.ca/fireupdates](https://ontario.ca/fireupdates), are prohibited.

All persons are prohibited from entering the area indicated in hatched areas on the map below unless authorized by a travel permit issued by the Ministry of Natural Resources.

***Following direction from the Ministry of Natural Resources Kenora District, an evacuation order is also in effect for above-mentioned areas that remain restricted.***

*Inquiries about the Implementation Orders and area restrictions can be directed to the Kenora District Information Officer:*

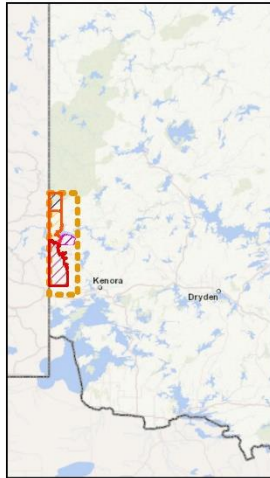
*Conor Lee Kam – [conor.leekam2@ontario.ca](mailto:conor.leekam2@ontario.ca) / (807) 620-7883.*



MINISTRY OF NATURAL RESOURCES

Active Implementation Orders  
EAO 2025-003

**KENORA  
NORTHWEST REGION**



**Legend**

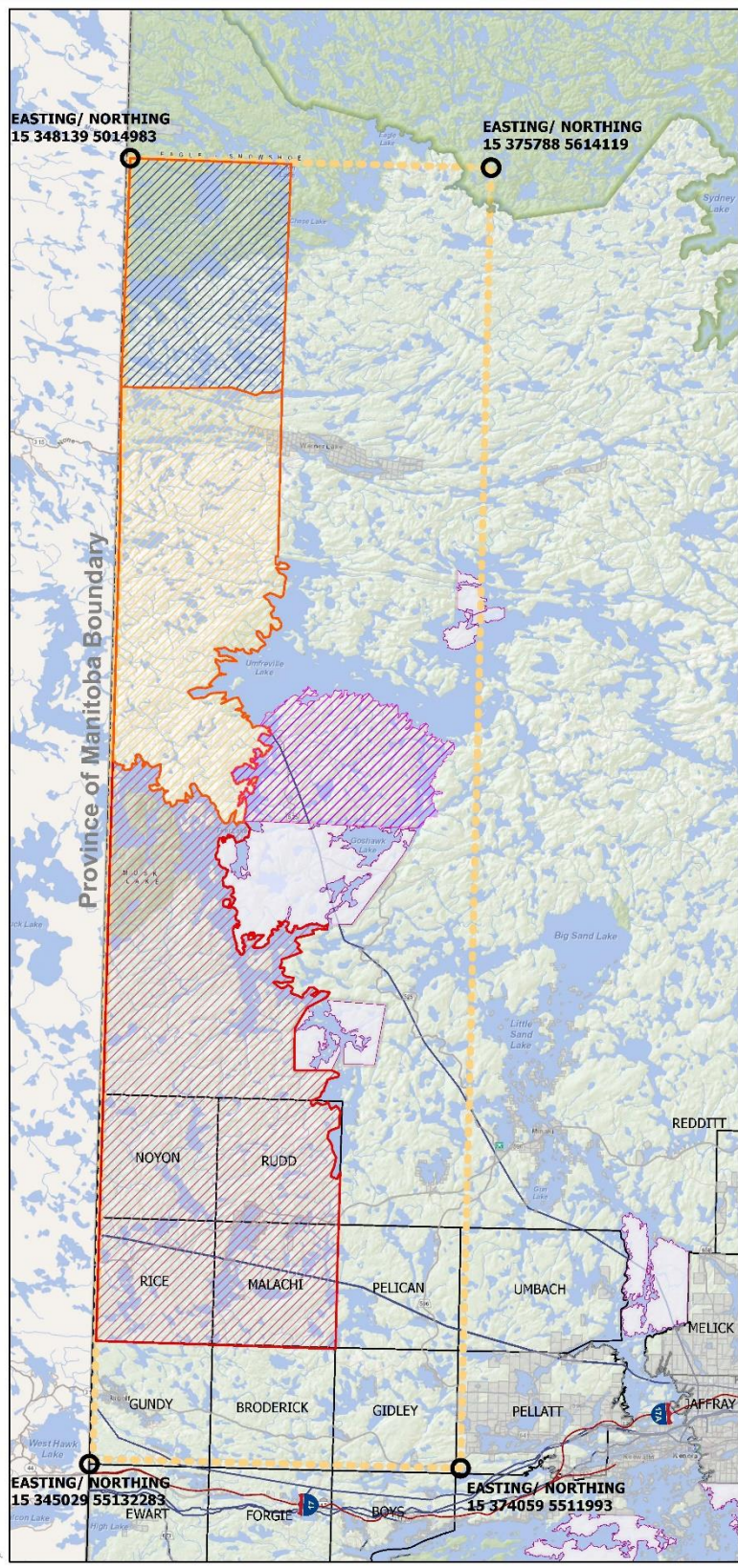
- Coordinate Location
- Kenora Fire**
  - IO-2025-003-KEN003
  - IO-2025-003-KEN006, KEN007
  - IO-2025-003-KEN010, KEN011
  - IO-2025-003-KEN012, KEN013
- Emergency Area Order
- Utility Line
- Highway
- Geographic Township
- Patent Land
- First Nation Community
- Provincial Park

0 5 10  
Kilometers

1:300,000



The boundaries and features shown on this map are approximate and for general reference only. The Ministry of Natural Resources makes no warranties or representations regarding the accuracy, completeness, or reliability of the information provided. Users are advised to consult official sources for precise data. King's printer for Ontario, produced by the Ministry of Natural Resources.



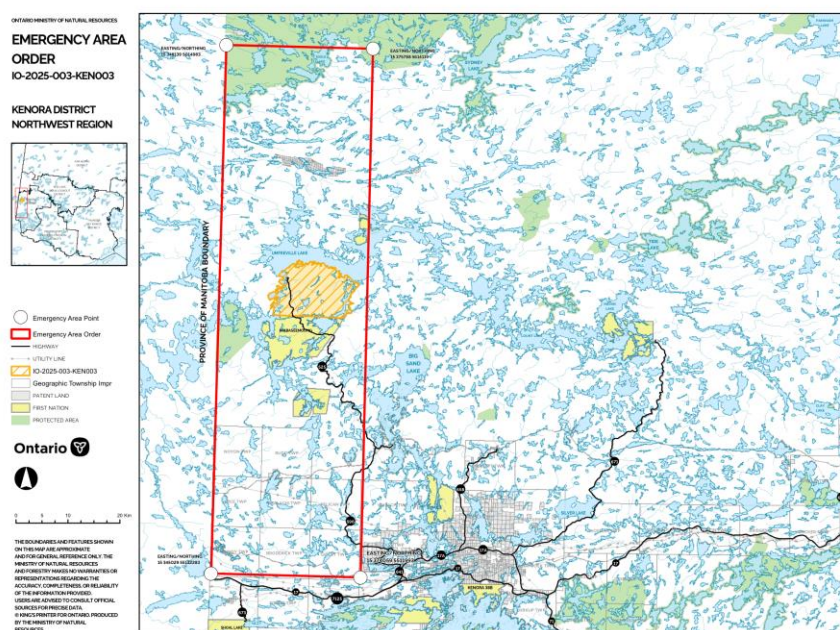
## KENORA 14

Aviation, Forest Fire and Emergency Services has been advised that as recommended by the Ministry of Natural Resources' Kenora District, an Implementation Order is now in effect for the purposes of public safety and/or effectual fire suppression, for areas near Kenora 14 Under the Emergency Area Order EAO 2025-03 declared on May 13, 2025.

- All travel and use of roads, including Highway 525 at and beyond the northern boundary of Wabaseemoong First Nation, is prohibited unless authorized by a travel permit.
- All use of lakes and waterways within the English River system between Tetu Lake (UTM 15U 356895 5562897) and Umfreville Lake (UTM 358379 5570917) is prohibited.
- All use of lakes and waterways between Goshawk Lake (UTM 15U 371012 5562576) and Umfreville Lake (UTM 3712722 5570758) is prohibited.
- All use and occupation of Crown Land, within the hatched area identified on the above Implementation Order map (Schedule A), is prohibited.

### Evacuation Order of area

1. All persons must immediately evacuate the area indicated on the hatched section of the map unless authorized by a travel permit issued by the Ministry of Natural Resources.
2. All persons are prohibited from entering the area indicated on the attached map unless authorized by a travel permit issued by the Ministry of Natural Resources.

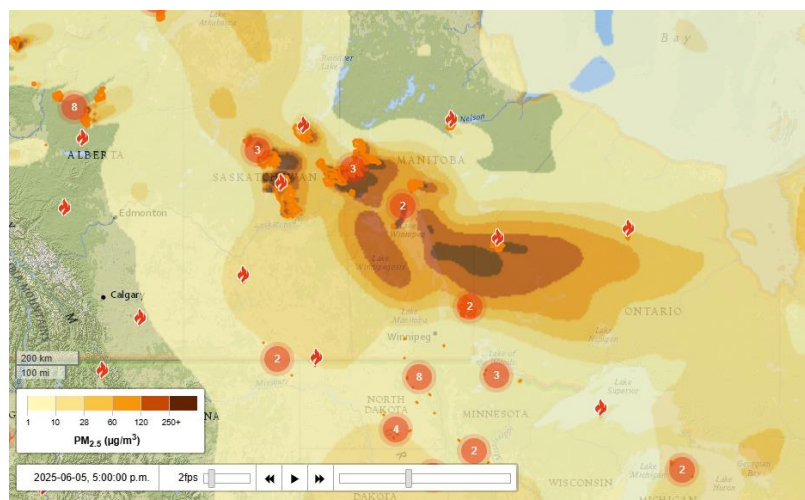
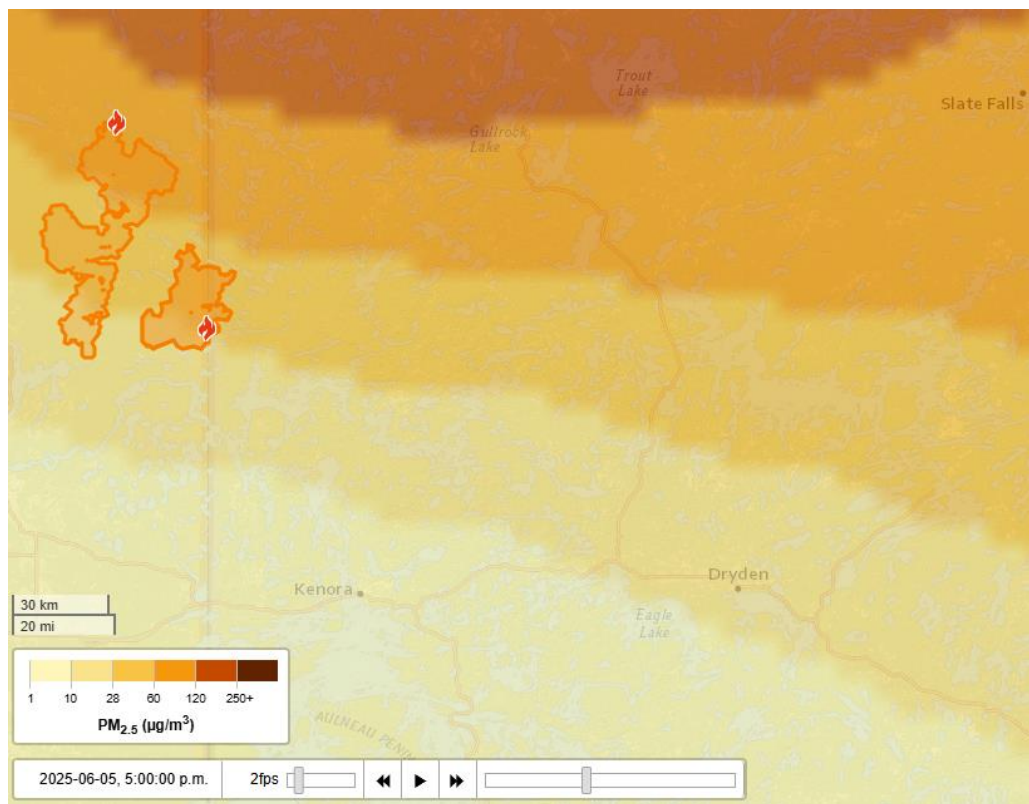




## FireSmoke Canada

FireSmoke Canada is the Canadian portal for information about wildland fire weather and smoke. From here you can access interactive maps displaying smoke and fire weather forecasts. These tools and data help raise awareness and make decisions about air quality, health and safety and emergency management.

Communities may be impacted by smoke drift from nearby fires, or fires in other provinces. Visit [FireSmoke.ca](https://firesmoke.ca) to see the current smoke forecast.



## Environment Canada – Air Quality Warning

Smoke is causing or expected to cause poor air quality and reduced visibility.

Wildfire smoke may remain in place for the next several days for some areas.

People more likely to be impacted by wildfire smoke, including people aged 65 and older, pregnant people, infants and young children, people with an existing illness or chronic health condition, and people who work outdoors, should avoid strenuous activities outdoors and seek medical attention if experiencing symptoms.

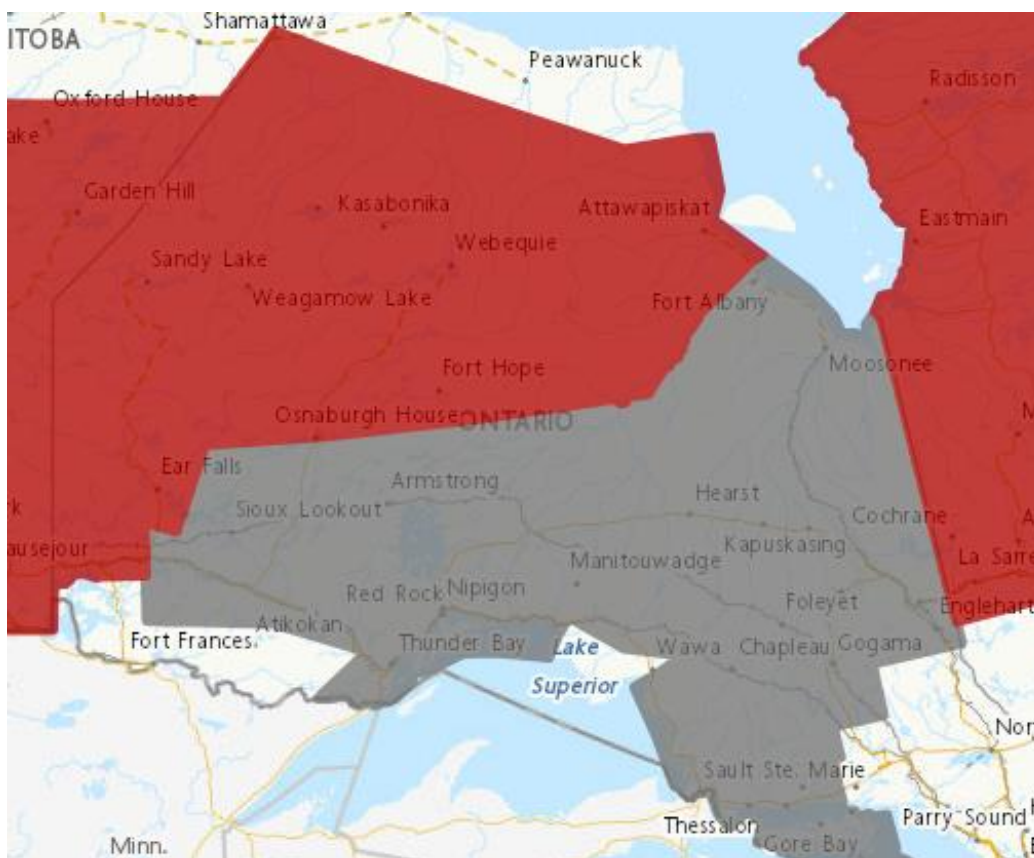
Always follow guidance from local authorities.

Learn more at [canada.ca/wildfire-smoke](https://canada.ca/wildfire-smoke).

Visit [airhealth.ca](https://airhealth.ca) for information on how to reduce your health risk and your personal contribution to pollution levels, as well as for current and forecast AQHI values.

Please continue to monitor alerts and forecasts issued by Environment Canada.














Issued by Environment Canada and the Province of Ontario.



*Environment Canada map depicting area (shaded red) impacted by Air Quality Warning.*



## Weather outlook – June 5-June 11

Thu 5 Jun	Fri 6 Jun	Sat 7 Jun	Sun 8 Jun	Mon 9 Jun	Tue 10 Jun	Wed 11 Jun
 21°C Smoke	 23°C Mainly sunny	 25°C 30% Chance of showers	 15°C Showers	 18°C 40% Chance of showers	 25°C A mix of sun and cloud	 25°C A mix of sun and cloud
Tonight	Night	Night	Night	Night	Night	
 9°C Smoke	 14°C 30% Chance of showers	 12°C Showers	 10°C Showers	 12°C Cloudy periods	 15°C 30% Chance of showers	

## Weather overview for June 5

Today will be mostly sunny. Max temp 20C although smoke may influence lower temperatures. RH 25-35%. Wind speed 10-15 km/hr out of the northwest for most of the afternoon. Possible gusts in the 30-40 km/hr range. Expect smoky skies for most of the day.

## Restricted Fire Zone in effect

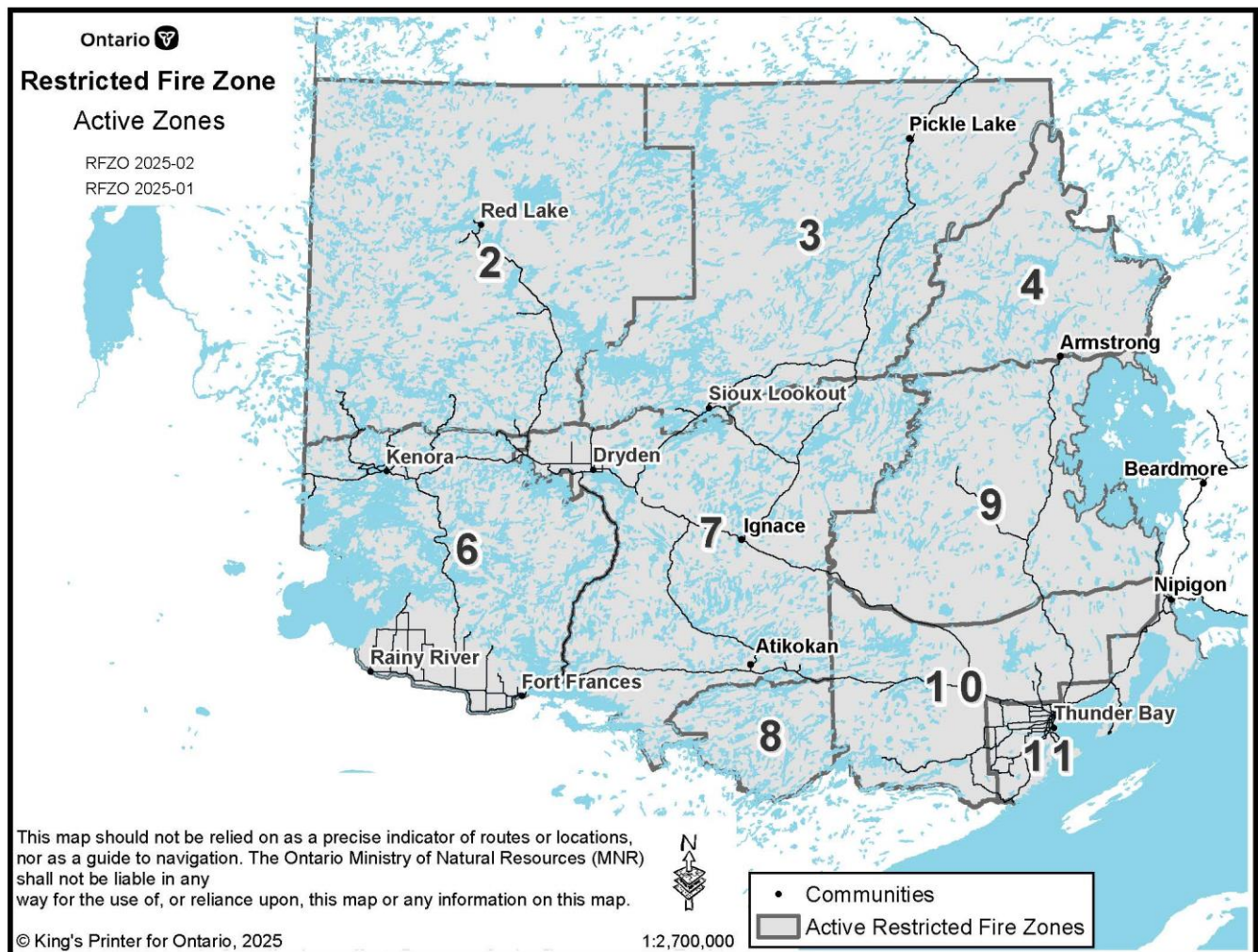
A Restricted Fire Zone is currently in effect in the Northwest Region for:

### Zones 2, 3, 4, 6, 7, 8, 9, 10, 11

Due to the extreme forest fire hazard conditions and to reduce the number of human-caused fires, the Ministry of Natural Resources has declared a Restricted Fire Zone for Zones 2, 3, 6, 7, 8 on May 16, and expanded the RFZ to include zones 4, 9, 10, 10, 11, effective Friday, May 30, at 12:01 a.m. local time.

The area impacted is from the Southwest corner of the USA, Manitoba and Ontario border, North along the Manitoba border to West of the midway point of Weeskayjahk Ohtahzhoganeeng Provincial Park, East to the western boundary Wabakimi Provincial Park, heading north and along the boundary of Wabakimi Provincial Park, south along the eastern side of the Little Jackfish River system, to the north end of Lake Nipigon, following the western shore of Lake Nipigon south to the west side of the Nipigon River system heading south to Red Rock and along the northeast boundary of Black Bay continuing south along the west side of St. Ignace Island to the Canada – USA border, then west along the Canada USA border to the Southwest corner of the USA, Manitoba and Ontario border.

No open air burning, including campfires, is permitted within the boundaries of a Restricted Fire Zone. Portable gas or propane stoves may be used for cooking and warmth BUT must be handled with extreme caution. All burning permits are suspended. [Learn more about the fire restrictions here.](#)





# What is a **restricted fire zone**?

A Restricted Fire Zone (RFZ) is a geographic area where the use of open fires, such as campfires or debris burning, is restricted. It is a temporary measure put in place by the Ministry of Natural Resources and Forestry (MNR) to prevent human-caused fires.

## What are the RFZ rules?

A Restricted Fire Zone (RFZ) may last from a few days to weeks and is lifted as soon as conditions allow.

It is illegal to start any fire within the RFZ area. Failure to comply could result in a fine of up to \$25,000 and three months in jail. If your illegally started fire causes a wildland fire, you may also have to pay for some of the costs of suppressing the fire.

You can still go camping, hiking, fishing, and have fun outdoors, but if you need heat for cooking or warmth, use a portable gas or propane stove.

Portable charcoal equipment, such as BBQs and Hibachis, are illegal except close to a dwelling that you legally occupy or in an organized campground.

Commercial campground operators may allow campfires if certain conditions are met. Please check with the campground.

## Report a forest fire

You can help protect Ontario's forests.

If you see smoke or flames, or would like to report an unattended fire, call 310-FIRE (3473) north of the French and Mattawa rivers, or 911 south of the rivers.

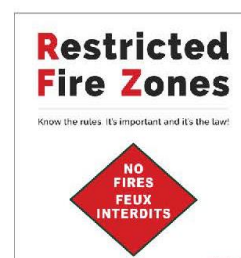
## Am I in an RFZ?

To see all current Restricted Fire Zones in effect, visit [Ontario.ca/forestfire](https://ontario.ca/forestfire) and select 'Use the interactive map'. There you can zoom in to see borders of the restricted fire zones. Ensure that the 'current restrictions' map layer is activated.

Follow us on Twitter @ONForestFires.

Also, advisories are issued to radio, television and print media.

Locally, look for highly visible green and red *No Fires* signs around roadways, camping spots, sports lodges, gas stations and stores.



[Ontario.ca/forestfire](https://ontario.ca/forestfire)



@ONForestFires

Ontario



## Follow us on social media

### English

### French



[@ONforestfires](https://www.instagram.com/ONforestfires)

[@ONfeudeforet](https://www.instagram.com/ONfeudeforet)



[@onforestfires](https://www.facebook.com/onforestfires)

[@onfeudeforet](https://www.facebook.com/onfeudeforet)



[@ONforestfires](https://twitter.com/ONforestfires)

[@ONfeudeforet](https://twitter.com/ONfeudeforet)

## Visit our website

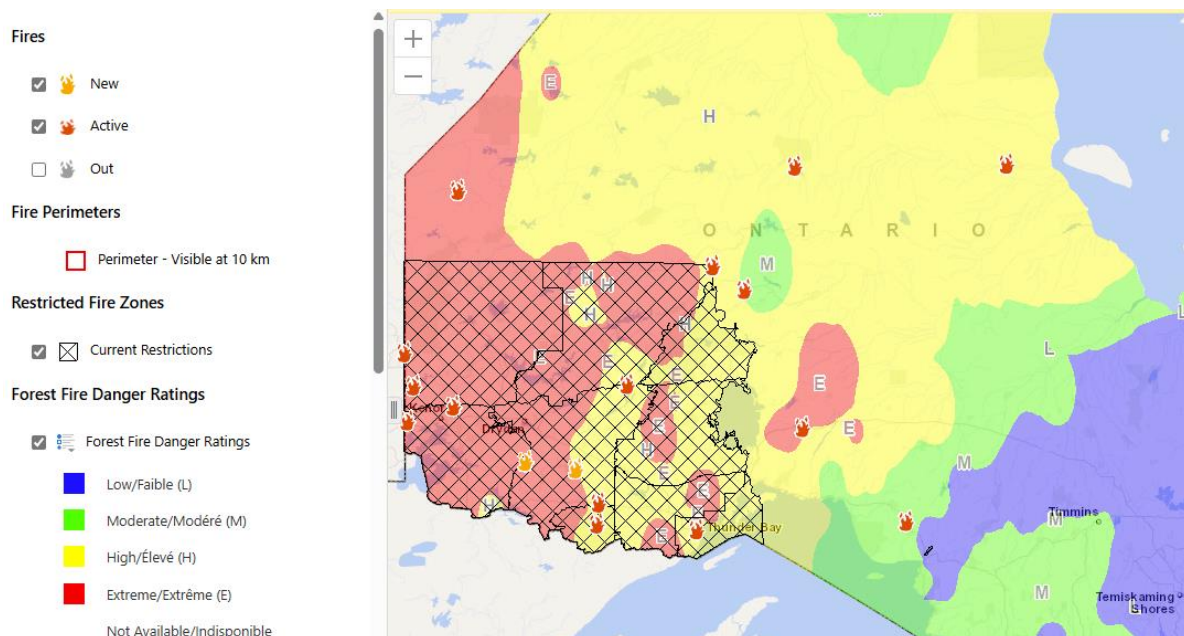
English - [www.ontario.ca/page/forest-fires](https://www.ontario.ca/page/forest-fires)

French - [www.ontario.ca/fr/page/incendies-de-foret](https://www.ontario.ca/fr/page/incendies-de-foret)

## View our interactive fire map

To view our interactive fire map - featuring active fires, fire perimeters, and detailed boundaries of the Restricted Fire Zone - please visit:

<https://www.liaapplications.lrc.gov.on.ca/ForestFireInformationMap/index.html?viewer=FFIM.FFIM>



*Ontario's interactive fire map, June 5, 2025, 07:00. The interactive fire map provides the forest fire danger rating as calculated by over 130 weather stations across Ontario's Fire Region. This changes throughout the day to reflect up to date weather information.*