



FOREST FIRE UPDATE

COMMUNITY NEWSLETTER FOR **JUNE 2, 2025** **KENORA 020/KENORA 014**



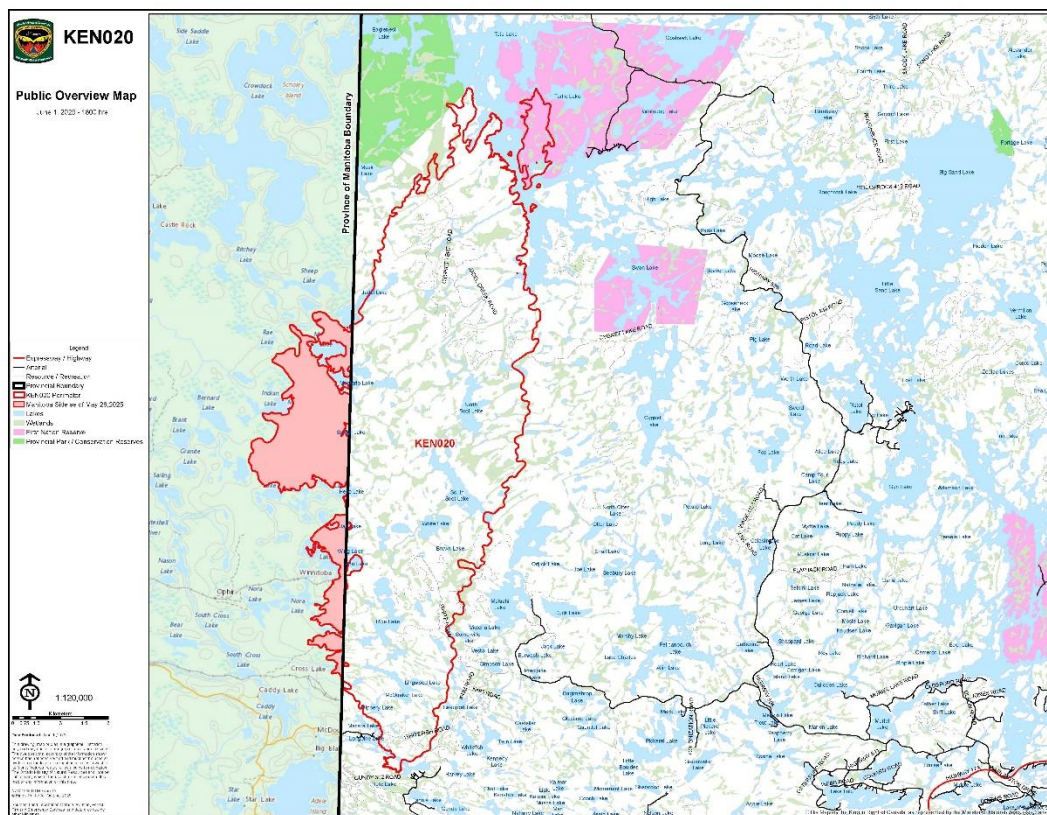
The western flank of Kenora 20, near Jadel Lake on the Manitoba side of the border (EA063), May 30, 2025. Photo by Blair McKenzie, Operations Chief.

Current Fire Situation

- A total of 12 helicopters and 202 personnel are assigned to Kenora 20 and Kenora 14, comprising firefighters, overhead staff, flight crews and medics.
- Smoke from active fires to the west and northwest continues to be a significant concern. Heavy smoke in this area this morning may impact aerial operations over Kenora 20.

Kenora 20

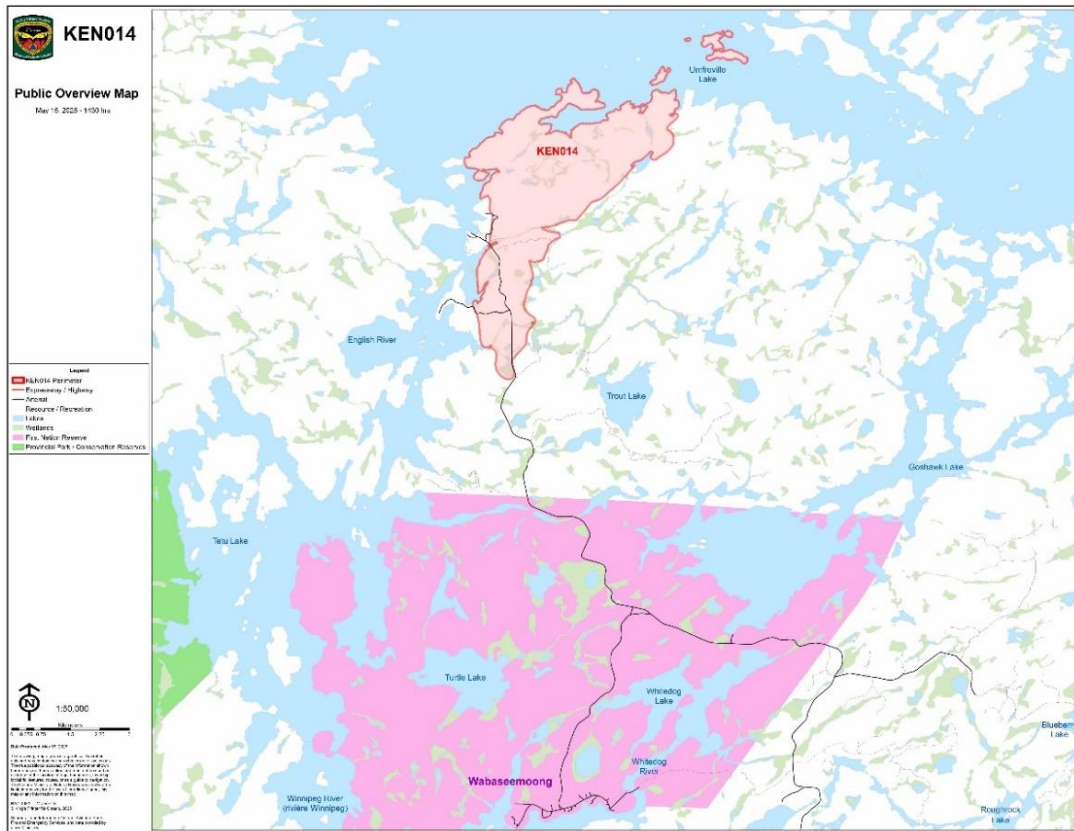
- Kenora 20 is now measuring 35,151.7 hectares and is not under control. This size includes the entire fire area spanning Ontario and Manitoba.
- The change in size is attributed to growth on the western flank, notably near Jadel Lake. The western side continues to be the most active area of the fire.
- The eastern flank has shown no change, however increasing fire intensity has been observed within the fire's interior as drying conditions become more extreme.
- Excellent progress has been made on the "jump fire" area near Wabaseemoong with no growth observed on the established perimeter. Crews continue to patrol the area for hotspots and structural protection remains in place in the community.
- Four additional Type 2 wildland firefighting crews arrived yesterday to support ongoing suppression efforts.
- The wildland fire hazard remains extreme. A cold front is expected to move into the area today bringing cooler temperatures and possible precipitation that may bring some temporary relief.



Date on map represents the most up-to-date fire perimeter.

Kenora 14

- Kenora 14 is currently being held at 1,607 hectares in size.
- Crews continue to patrol and address priority areas; however, recent infrared scans have detected significantly fewer hotspots requiring action.



Date on map represents the most up-to-date fire perimeter.

Information Contacts

AFFES Brown IMT – Information Officer (fire updates, media inquiries)

Alison Bezubiak - affes.inc1-info@ontario.ca / 807-323-3743

AFFES Community Liaison Officer (Wabaseemoong, area Indigenous communities)

Krista Prosser – Krista.Prosser@ontario.ca / 807-407-9675

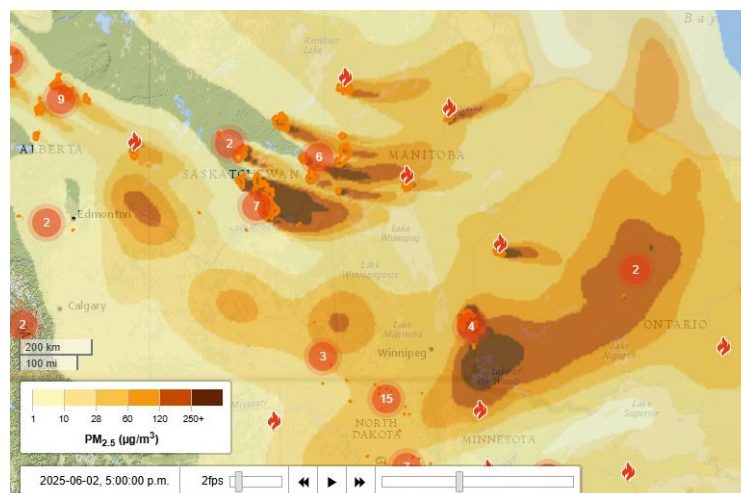
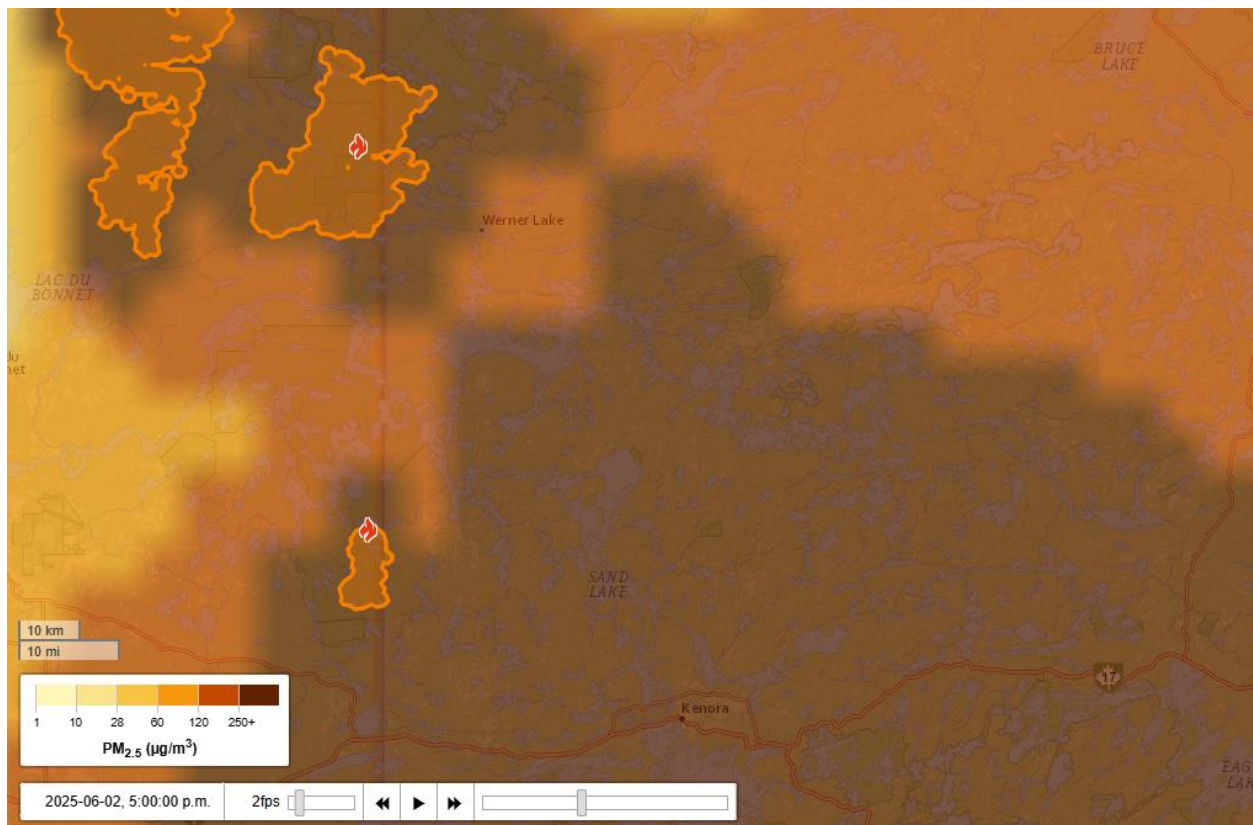
Kenora District IMT – Information Officer (road closures, travel restrictions)

Conor Lee Kam – conor.leekam2@ontario.ca / (807) 620-7883

FireSmoke Canada

FireSmoke Canada is the Canadian portal for information about wildland fire weather and smoke. From here you can access interactive maps displaying smoke and fire weather forecasts. These tools and data help raise awareness and make decisions about air quality, health and safety and emergency management.

Communities may be impacted by smoke drift from nearby fires, or fires in other provinces. Visit [FireSmoke.ca](https://www.fire-smoke.ca) to see the current smoke forecast.



Environment Canada - Special Air Quality Statement

Smoke is causing or expected to cause poor air quality and reduced visibility.

Wildfire smoke is expected to remain in place for the next several days.

Forest fire danger ratings are currently high or extreme with restrictions in place. These conditions are expected to persist into the weekend.

As smoke levels increase, health risks increase. Limit time outdoors. Consider reducing or rescheduling outdoor sports, activities and events.

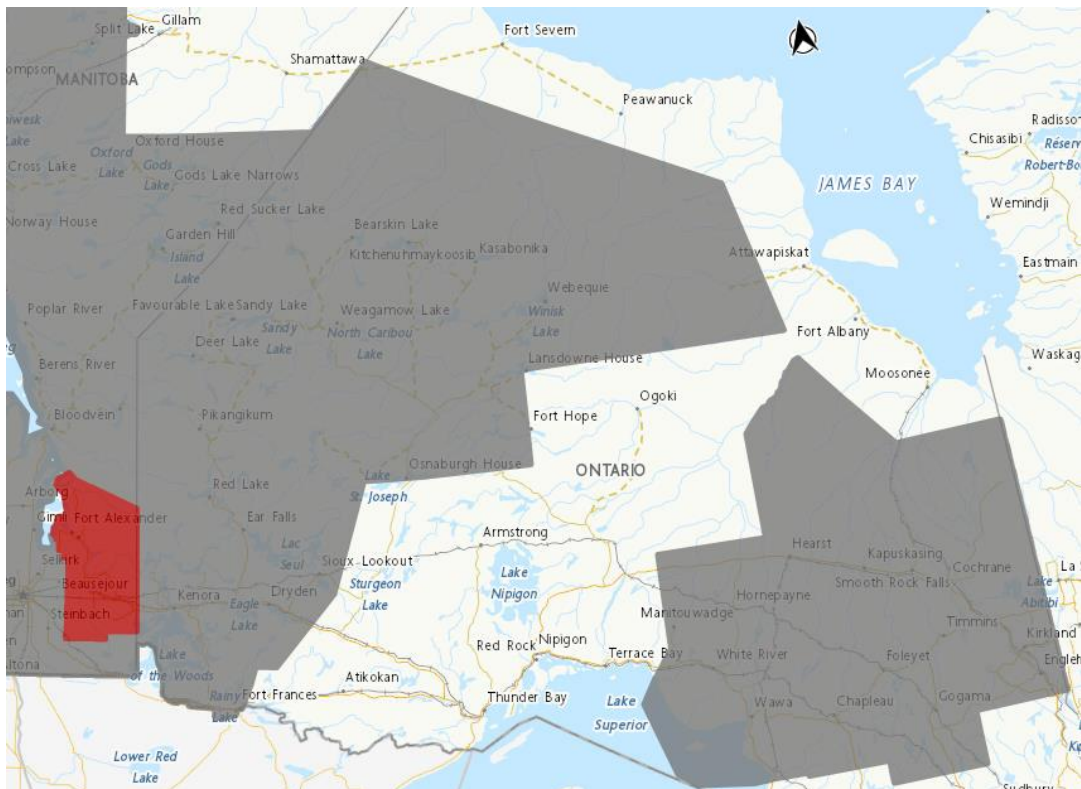
Always follow guidance from local authorities.

Learn more at canada.ca/wildfire-smoke.

Visit airhealth.ca for information on how to reduce your health risk and your personal contribution to pollution levels, as well as for current and forecast AQHI values.














Please continue to monitor alerts and forecasts issued by Environment Canada.

Issued by Environment Canada and the Province of Ontario.



Environment Canada map depicting area (shaded grey) impacted by Special Air Quality Statement.

Weather outlook – June 2-June 8

Mon 2 Jun	Tue 3 Jun	Wed 4 Jun	Thu 5 Jun	Fri 6 Jun	Sat 7 Jun	Sun 8 Jun
 24°C 40% Chance of showers	 21°C Sunny	 24°C 30% Chance of showers	 24°C A mix of sun and cloud	 23°C 30% Chance of showers	 23°C 30% Chance of showers	 21°C Cloudy
Tonight	Night	Night	Night	Night	Night	
 11°C 40% Chance of showers	 10°C Cloudy periods	 9°C Cloudy periods	 11°C Cloudy periods	 13°C Cloudy periods	 14°C Cloudy	

Regional weather for June 2

Today will be mostly cloudy with scattered showers bringing 2-5mm of accumulation this afternoon. Gusty variable winds are likely during the shower activity and then near calm conditions will be in place this evening and overnight. RH values may fall towards 35% later this morning but will climb to over 70% this afternoon with the rain. Overnight RH recovery will be 80-90%.

Restricted Fire Zone in effect

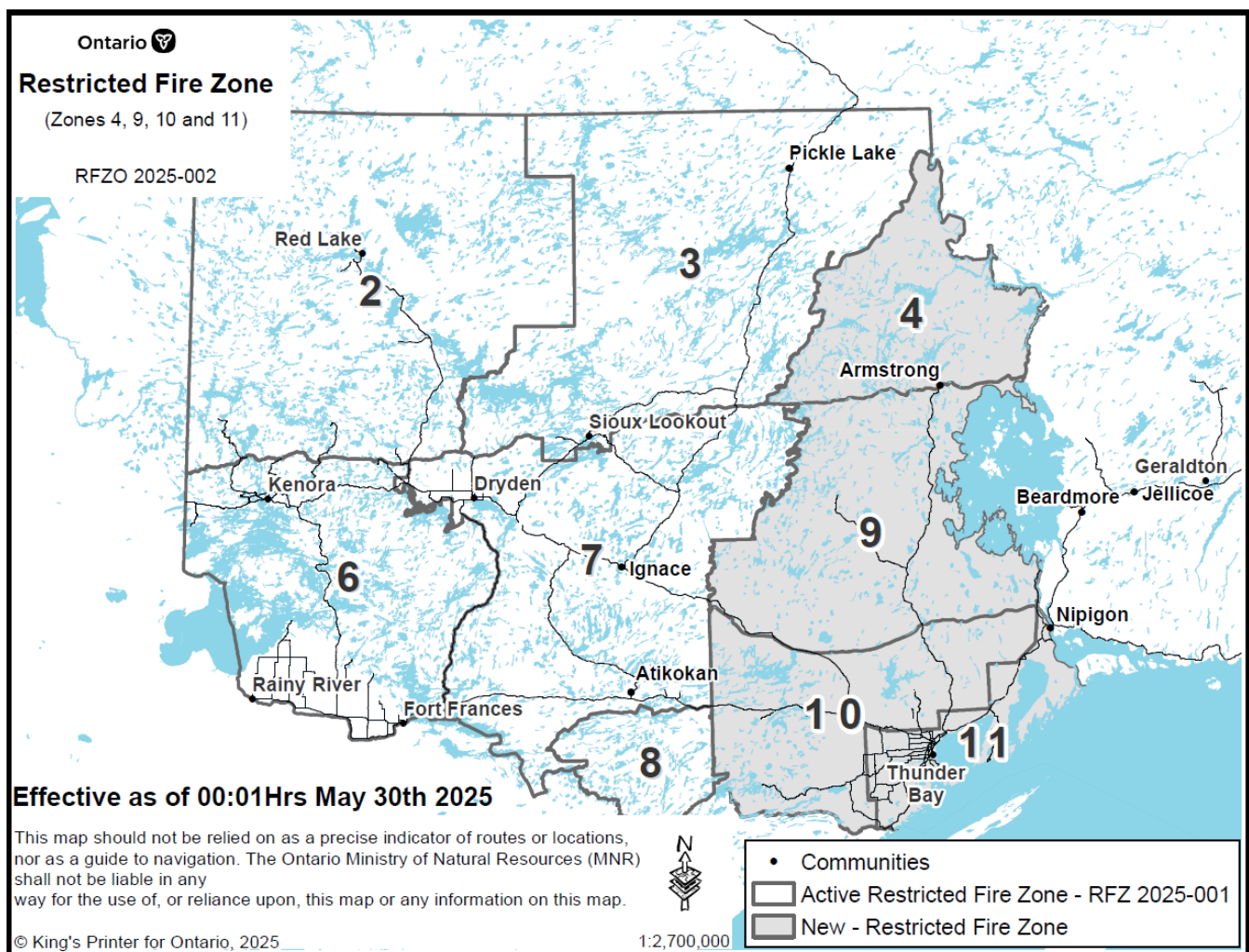
Due to the extreme forest fire hazard, the Ministry of Natural Resources will be declaring a Restricted Fire Zone effective Friday, May 16 at 12:01 am local time for a portion of the Northwest Region (zones 2, 3, 6, 7, 8). The area impacted will be from the Southwest corner of the USA, Manitoba and Ontario border, North along the Manitoba border to West of the midway point of Weeskayjahk Ohtahzhoganeeng Provincial Park, East to North of Wabakimi Provincial Park, South along the Western border of Wabakimi Provincial Park to the Eastern border of Quetico Provincial Park until the USA border, then back West along the USA/Canada border to the Manitoba Border.

Effective May 30 at 12:01 am local time the Ministry of Natural Resources has implemented another Restricted Fire Zone (RFZ) for the Northwest Region to include zones 4, 9, 10 and 11. The area impacted by the new RFZ is from south of the west side of St Ignace Island, west along the Canada–U.S.A. border, north along the District of Rainy River–District of Thunder Bay border, north along the English River system, east to the western boundary of the Brightsand River Provincial Park, following north to and along the boundary of Wabakimi Provincial Park, south along

the eastern side of the Little Jackfish River system, to the north end of Lake Nipigon, following the western shore of Lake Nipigon south to the west side of the Nipigon River system heading south to Red Rock and along the northeast boundary of Black Bay Peninsula to the west side of St. Ignace Island.

See the expanded Restricted Fire Zone Map below.

No open air burning, including campfires, is permitted within the boundaries of a Restricted Fire Zone. Portable gas or propane stoves may be used for cooking and warmth BUT must be handled with extreme caution. All burning permits are suspended. [Learn more about the fire restrictions here.](#)



Travel restrictions in fire areas

Evacuation Order of area

1. All persons must immediately evacuate the area indicated on the hatched section of the map unless authorized by a travel permit issued by the Ministry of Natural Resources.
2. All persons are prohibited from entering the area indicated on the attached map unless authorized by a travel permit issued by the Ministry of Natural Resources.

KEN020

Aviation, Forest Fire and Emergency Services has been advised that as recommended by the Ministry of Natural resources' Kenora District, an Implementation Order is now in effect for the purposes of public safety and/or effectual fire suppression, for areas near Kenora 20 Under the Emergency Area Order EAO 2025-03 declared on May 13, 2025.

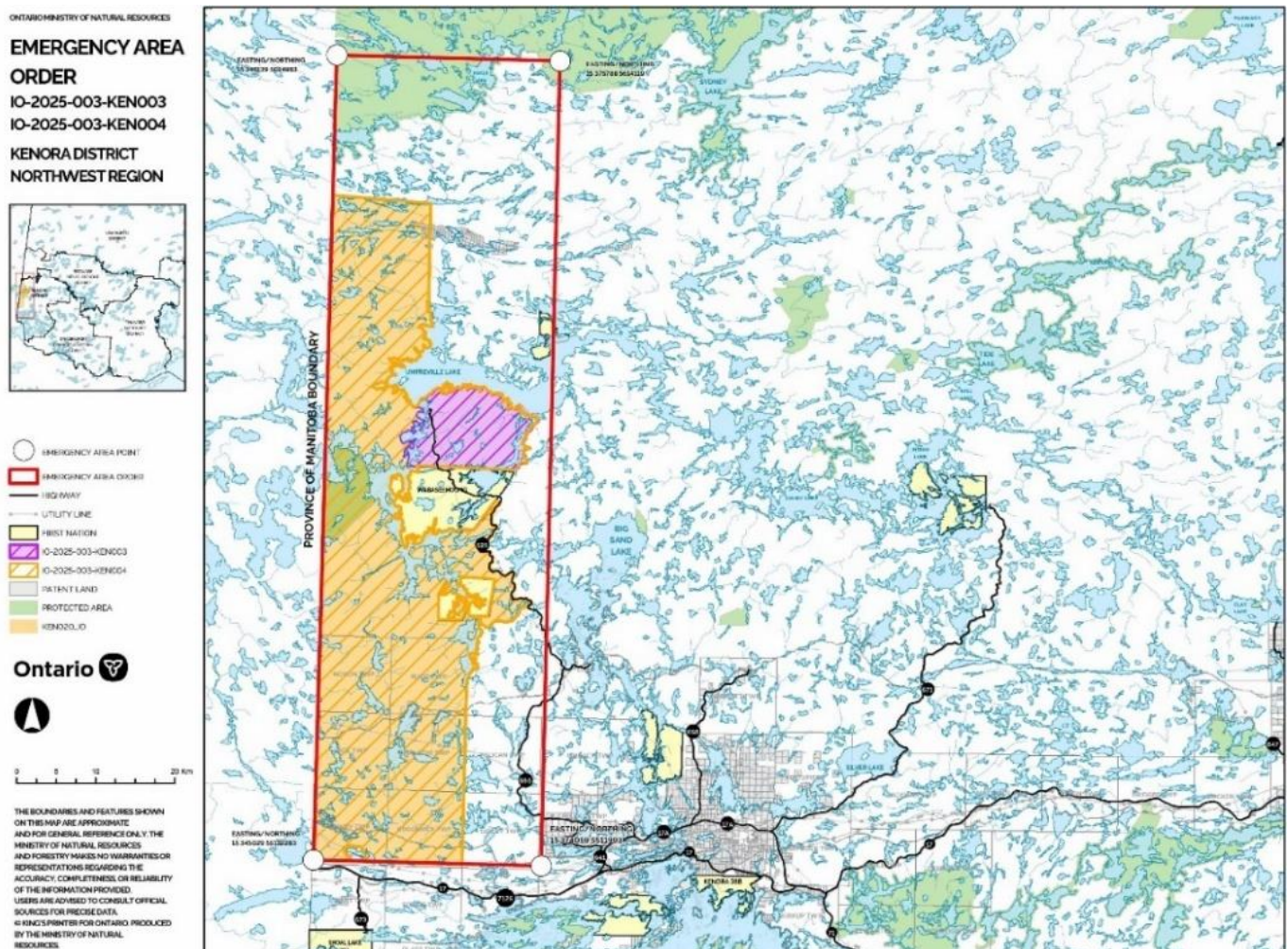
1. All travel and use of roads, including Gundy Road north of Tannis Lake, Pickerel Lake Road beyond the Pelicanpouch access point at km 9, and Cygnet Lake Road, is prohibited unless authorized by a travel permit.
2. All use of lakes and waterways within the Area including the Winnipeg River below Whitedog Falls (UTM 15U 366399 5553102), Eaglenest Lake, Tetu Lake, Cygnet Lake, Rice Lake, Malachi Lake, Otter Lake, Macara Lake, Longpine Lake, and Dagimabrop Lake is prohibited.
3. All use and occupation of Crown Land, within the hatched area identified on the above Implementation Order map (Schedule A), is prohibited.

KEN014

Aviation, Forest Fire and Emergency Services has been advised that as recommended by the Ministry of Natural Resources' Kenora District, an Implementation Order is now in effect for the purposes of public safety and/or effectual fire suppression, for areas near Kenora 14 Under the Emergency Area Order EAO 2025-03 declared on May 13, 2025.

1. All travel and use of roads, including Highway 525 at and beyond the northern boundary of Wabaseemoong First Nation, is prohibited unless authorized by a travel permit.

2. All use of lakes and waterways within the English River system between Tetu Lake (UTM 15U 356895 5562897) and Umfreville Lake (UTM 358379 5570917) is prohibited.
3. All use of lakes and waterways between Goshawk Lake (UTM 15U 371012 5562576) and Umfreville Lake (UTM 3712722 5570758) is prohibited.
4. All use and occupation of Crown Land, within the hatched area identified on the above Implementation Order map (Schedule A), is prohibited.



Wildland Fire Q&A

Wildland fire suppression techniques

In Ontario, each wildland fire is assessed individually, and the response is tailored based on the fire's behavior, location, and potential impact on communities and values.

Q: What kind of tools do Ontario FireRangers use to fight fire?

Ontario's many lakes, rivers, and wetlands provide excellent water sources for wildland fire suppression using pumps and hoses. In areas without water, hand tools like axes, shovels, and Pulaskis are essential - especially for small surface fires, building fireguards, and putting out hot spots. Ground crews are often supported by bucketing helicopters which help reduce the intensity of surface fires.



Hose bags and used hose stored at the Kenora 20 / Kenora 14 Incident Command Post, June 1, 2025.

Q: What types of aircraft are used in wildland fire fighting in Ontario?

While the CL-415 waterbomber is Ontario's most recognizable firefighting aircraft, a variety of aircraft are utilized in wildland fire suppression. Twin Otters can be configured for water bombing, and many helicopters are equipped with tanks or buckets. Even aircraft that are not actively used to fight fires play an important role in moving crews and equipment.



A Bucketing helicopter returning from Kenora 20, June 1, 2025.

Q: Why don't waterbombers fight every fire?

Waterbombers are a vital asset in wildland firefighting, used alongside other suppression methods. They are primarily used on intense surface fires to reduce fire intensity and spread, allowing ground crews to safely move in and take effective action.



A CL-415 water bomber over Kenora 20, May 22, 2025.

Q: What does it mean when lines are holding?

When lines are holding, it means suppression efforts have successfully stopped the fire from spreading beyond the existing fire perimeter. Once the fire's spread is halted, firefighters continue patrol and work inward from the perimeter to extinguish remaining hot spots through the entire fire area.



An Ontario FireRanger nozzling on Kenora 14, May 9, 2025.

Follow us on social media

English

French



[@ONforestfires](https://www.instagram.com/ONforestfires)

[@ONfeudeforet](https://www.instagram.com/ONfeudeforet)



[@onforestfires](https://www.facebook.com/onforestfires)

[@onfeudeforet](https://www.facebook.com/onfeudeforet)



[@ONforestfires](https://twitter.com/ONforestfires)

[@ONfeudeforet](https://twitter.com/ONfeudeforet)

Visit our website

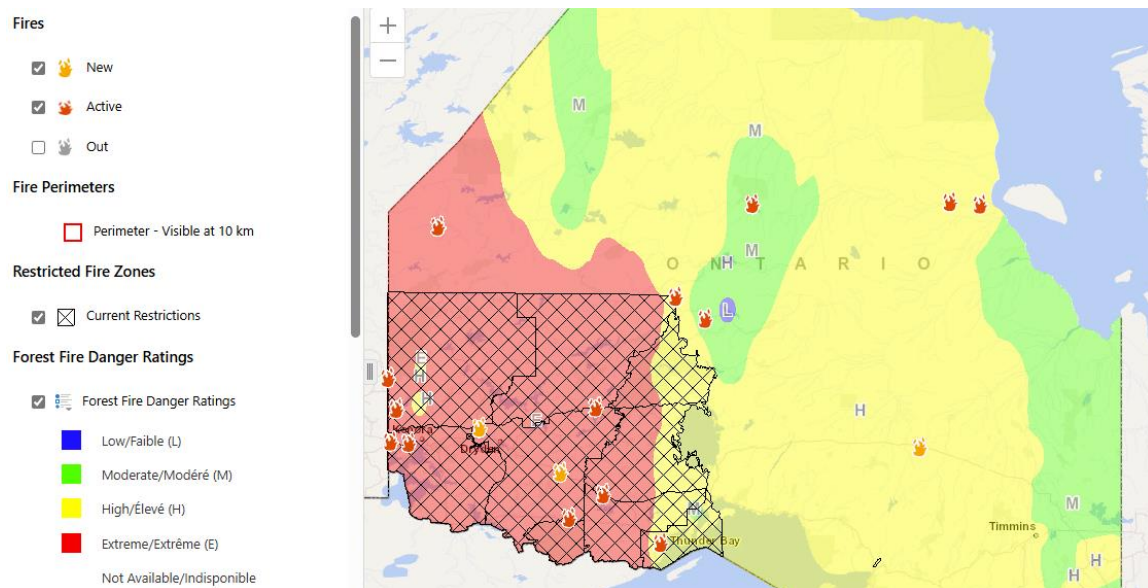
English - www.ontario.ca/page/forest-fires

French - www.ontario.ca/fr/page/incendies-de-foret

View our interactive fire map

To view our interactive fire map - featuring active fires, fire perimeters, and detailed boundaries of the Restricted Fire Zone - please visit:

<https://www.liaapplications.lrc.gov.on.ca/ForestFireInformationMap/index.html?viewer=FFIM.FFIM>



Ontario's interactive fire map, June 2, 2025, 07:00. The interactive fire map provides the forest fire danger rating as calculated by over 130 weather stations across Ontario's Fire Region. This changes throughout the day to reflect up to date weather information.